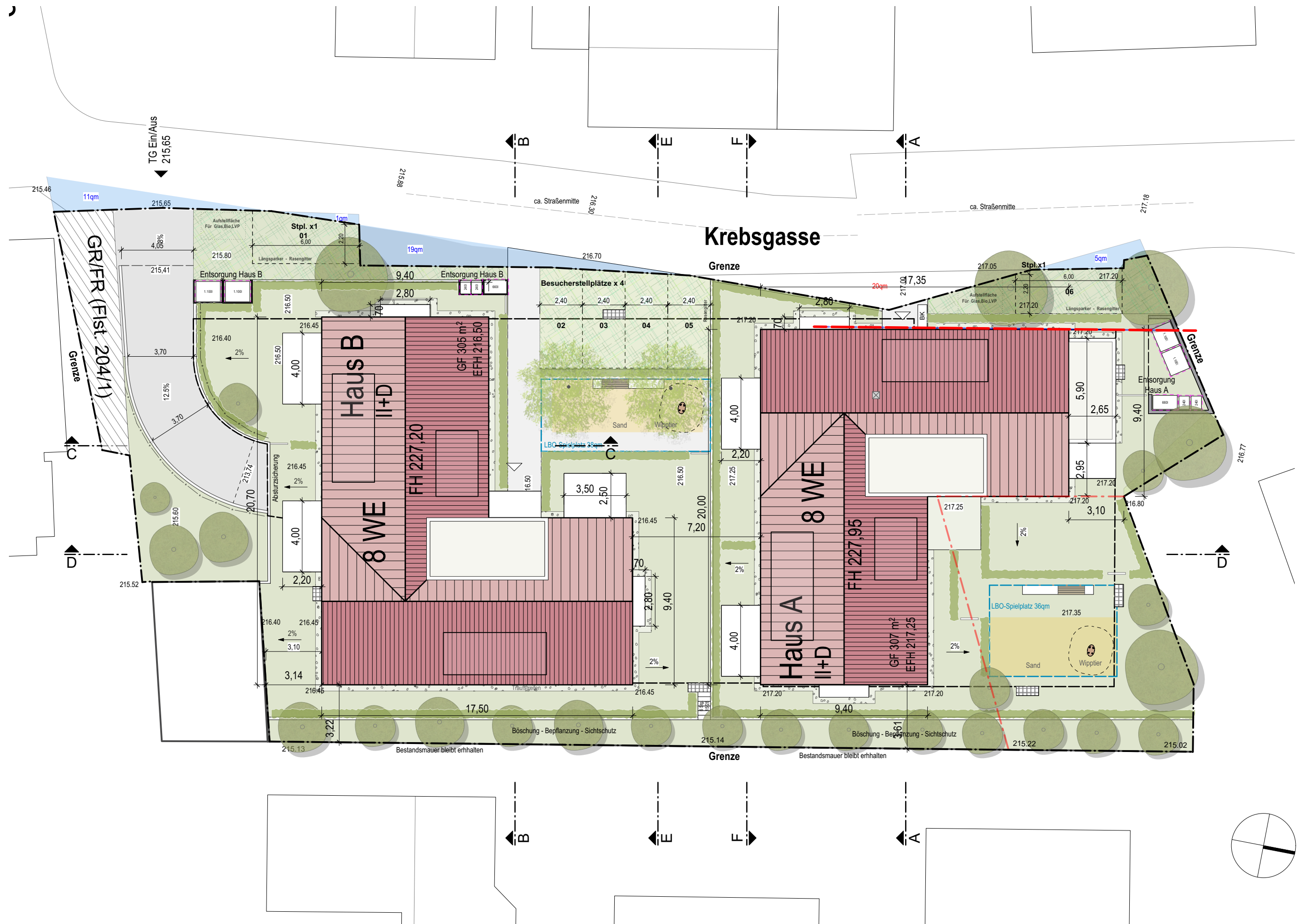


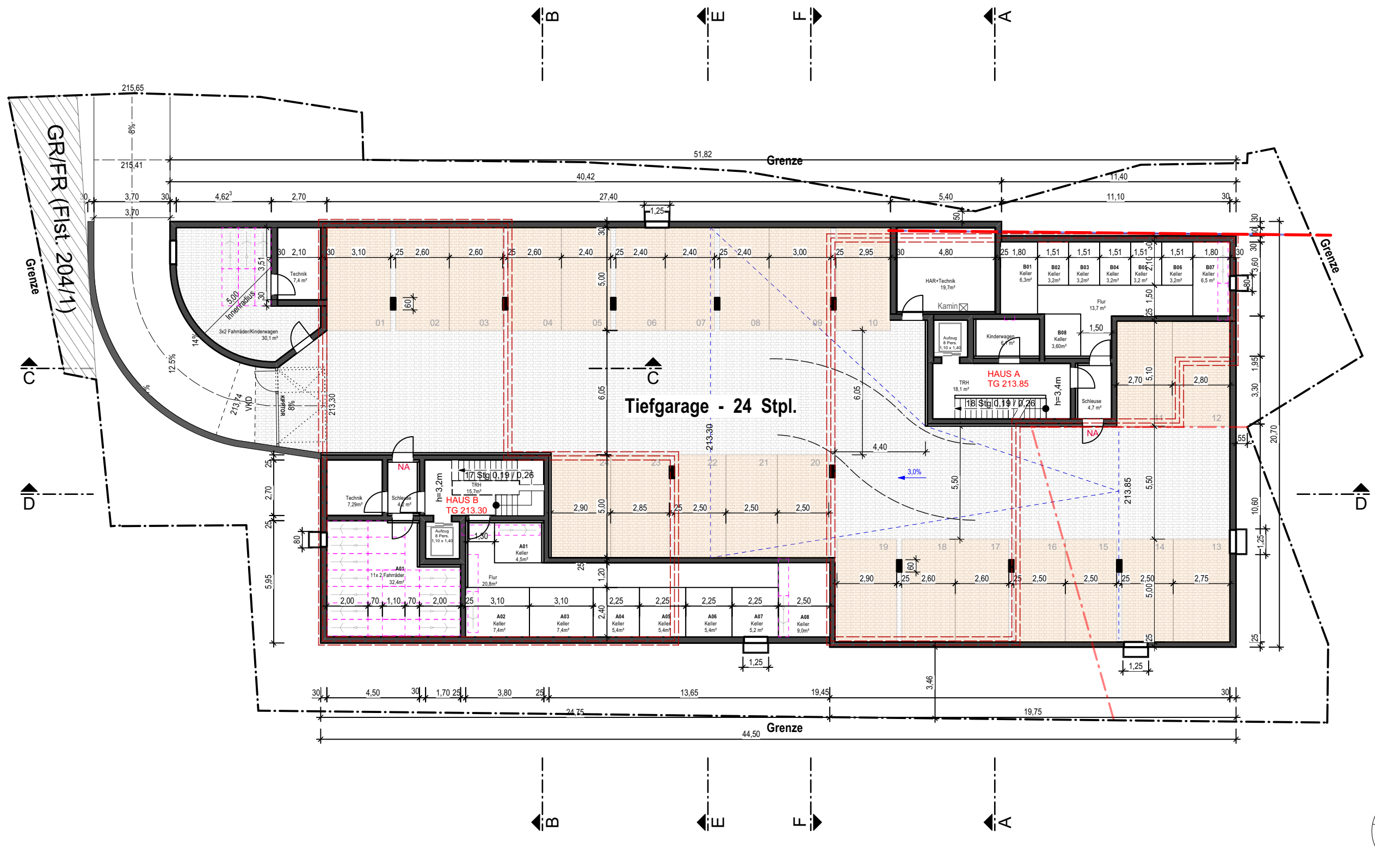
Ingersheim _ Krebsgasse

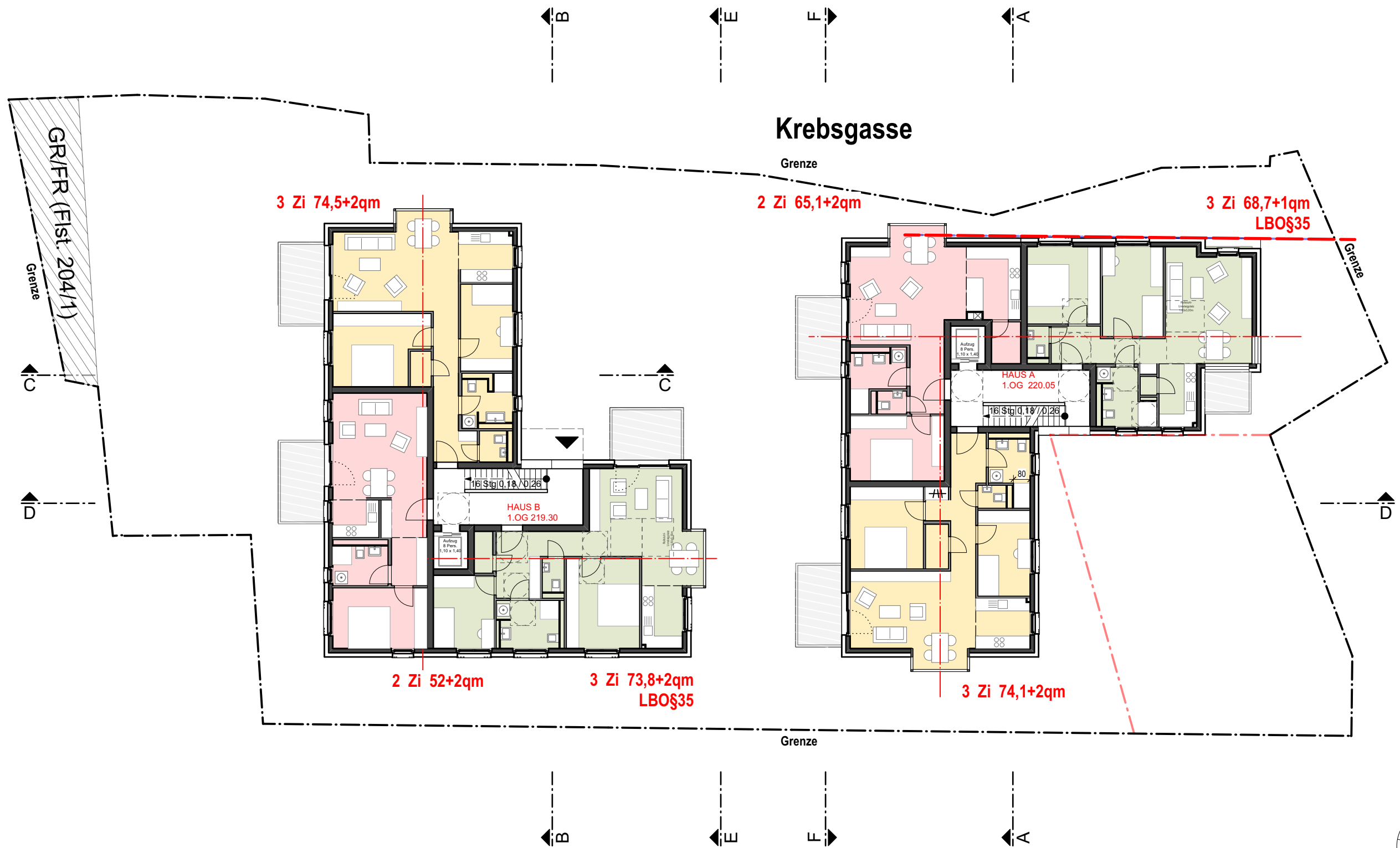
Neubau MFH mit 16 WE

BAUGESUCH VOM 15.11.2021
VERÄNDERTE PLANUNG VOM 07.03.2022

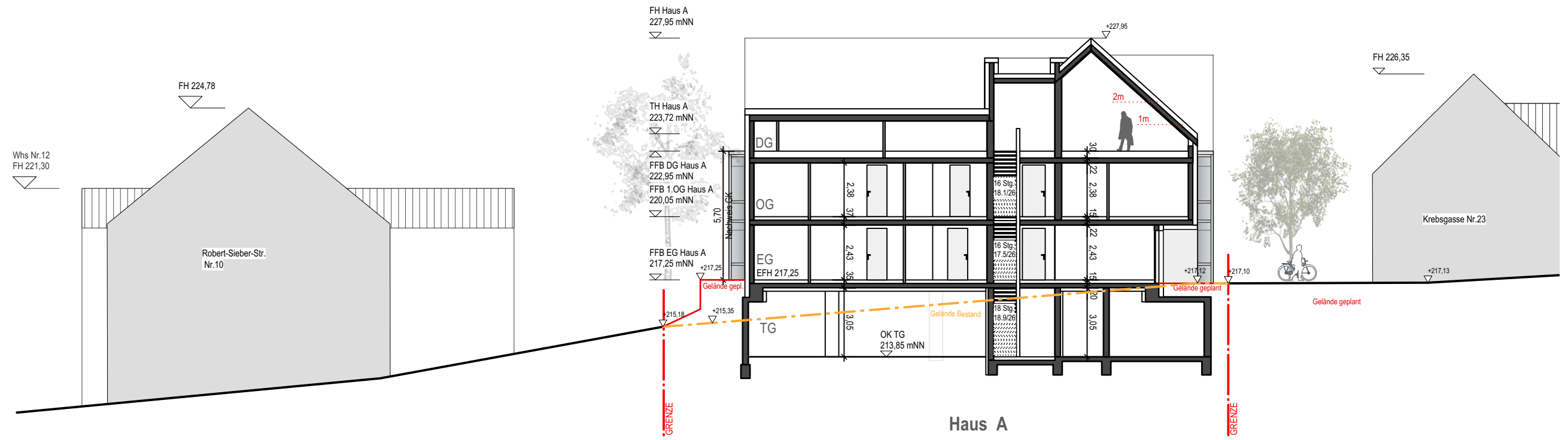




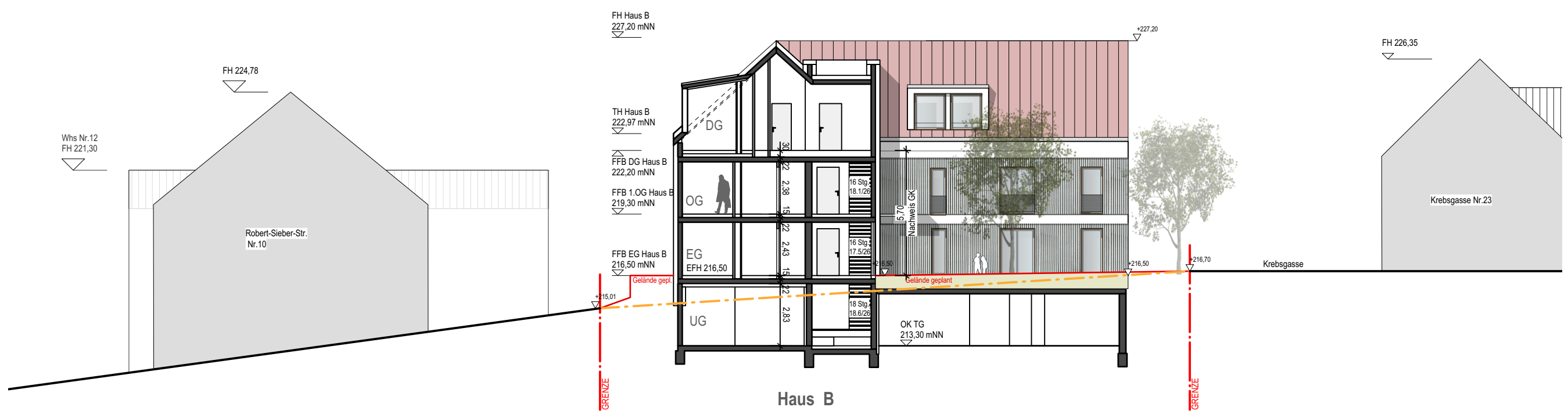




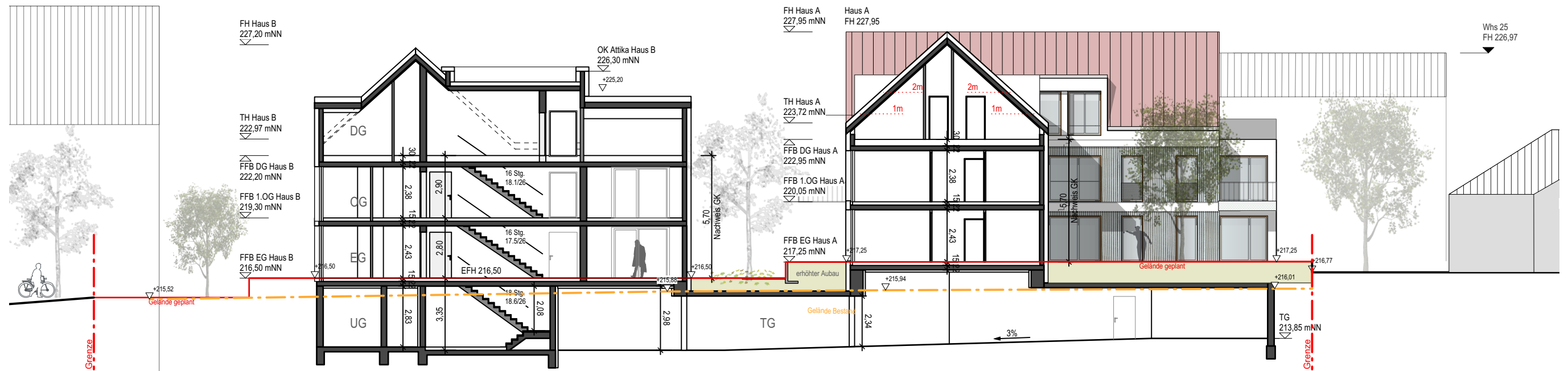




Schnitt AA



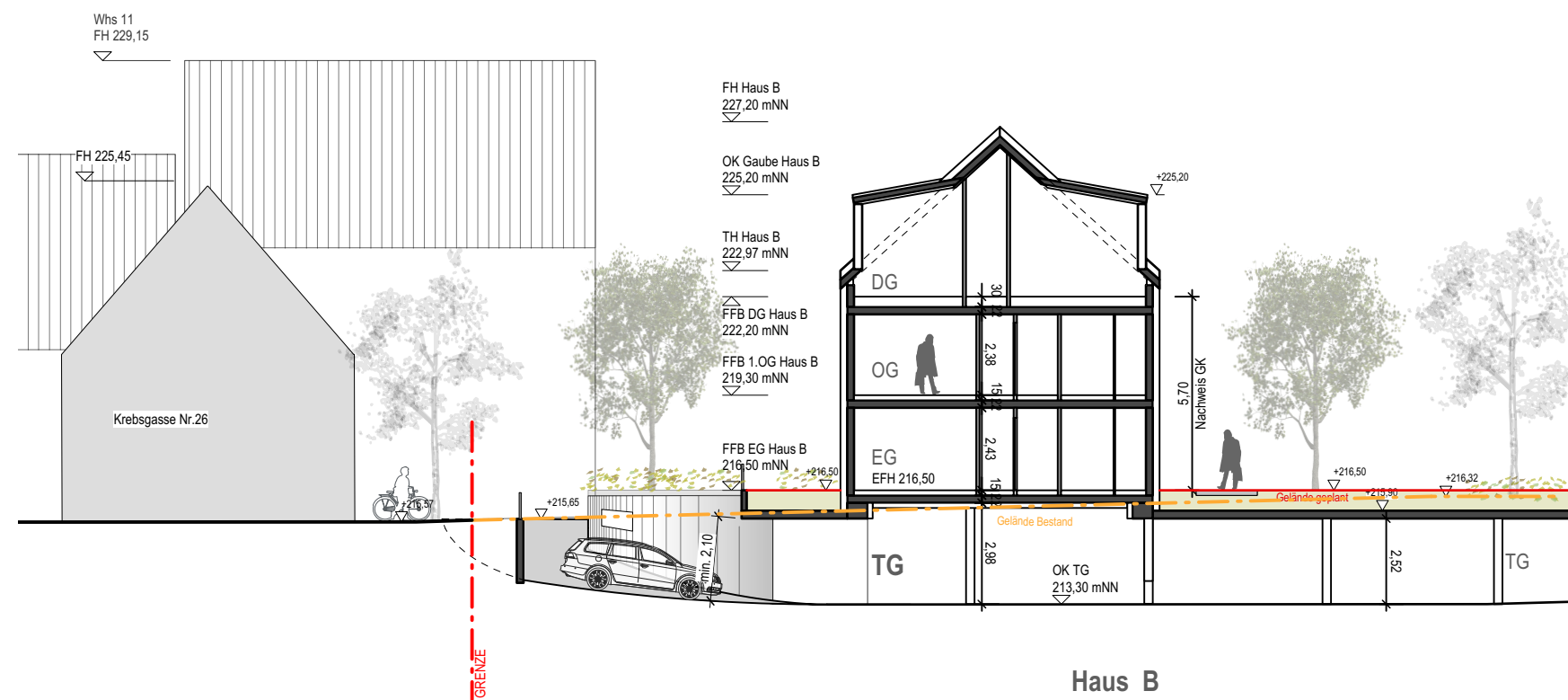
Schnitt BB



Haus B

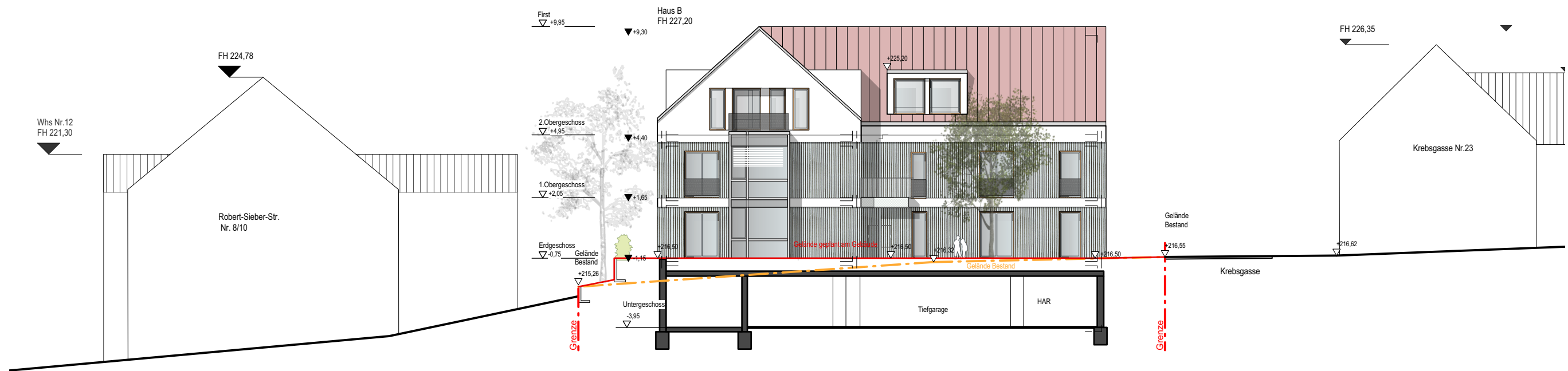
Haus A

Schnitt CC

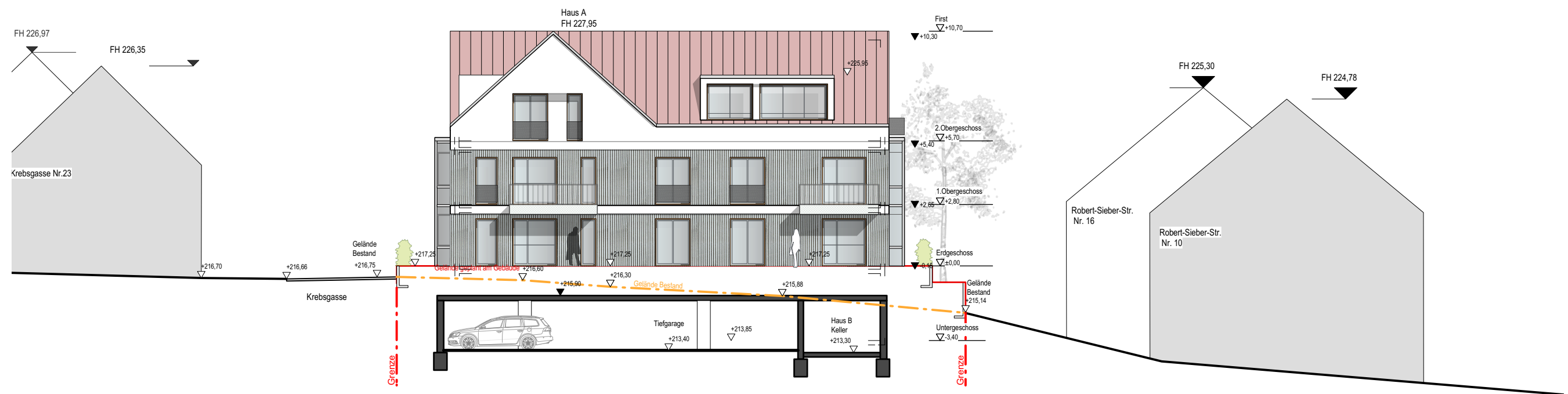


Haus B

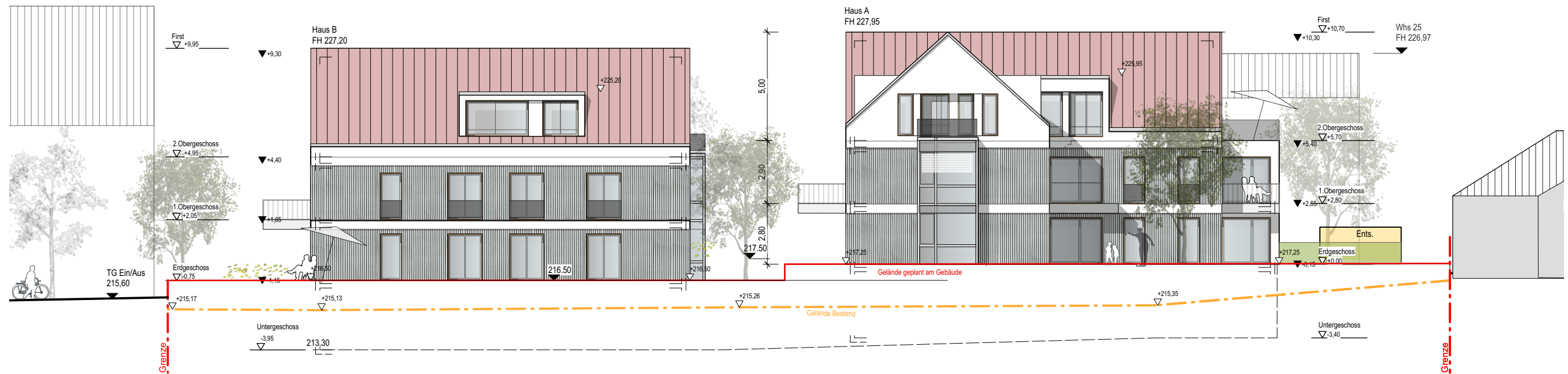
Schnitt DD



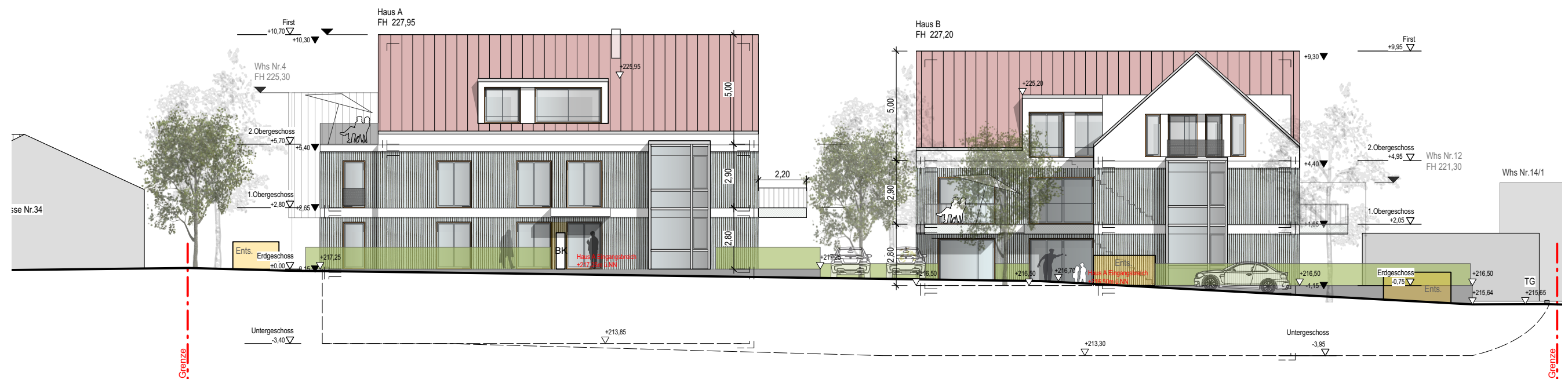
Schnitt EE / Ansicht Nord Haus B



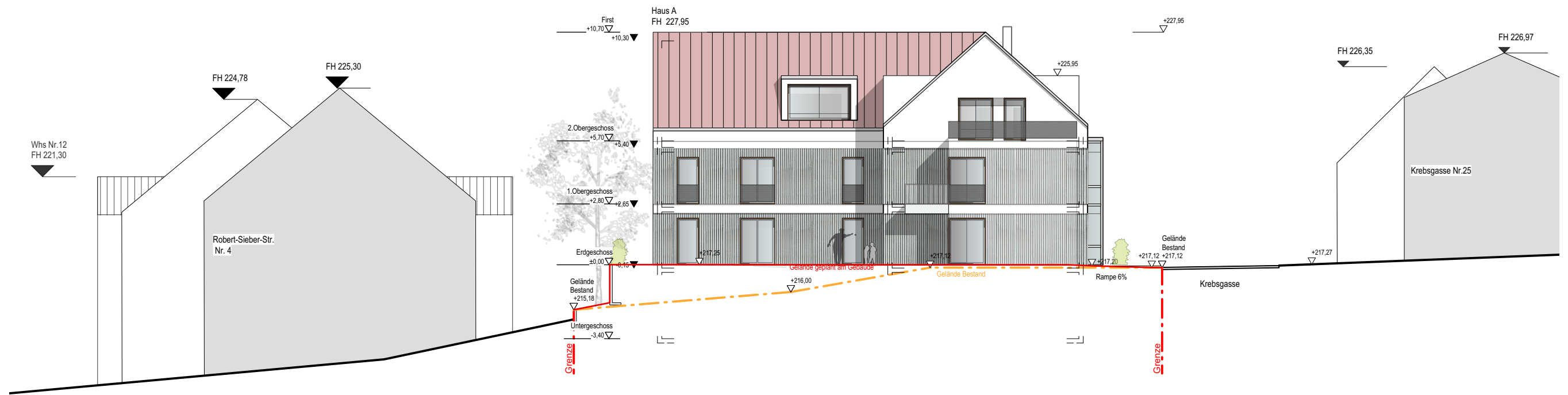
Schnitt FF / Ansicht Süd Haus A



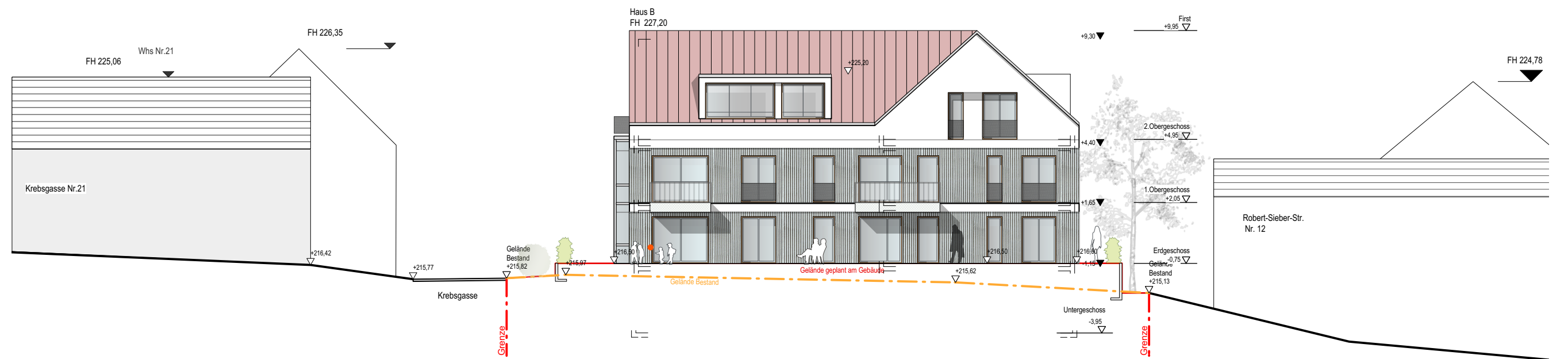
Ansicht Ost



Ansicht West



Ansicht Nord



Ansicht Süd